

Mudsock March BOM

Lucky Clover

Materials: Print or Solid Scraps
Shades of Kelly Green and White

Cutting Instructions:

Green Scraps cut 12 - 3.5" squares and 1 - 1.25"x9.5" strip
White Scraps cut 1 - 6.5" square and 9 - 2.25" squares

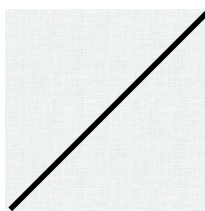


12.5" Unfinished Block

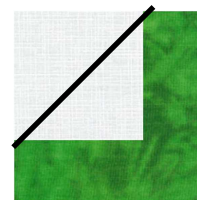
Construction:

Press ALL seams open to reduce the bulk at the intersections.

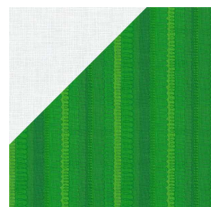
1. For the Quarter-Snowball units, draw a diagonal line from corner to corner on the 2.25" white squares.



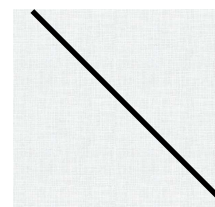
2. Lay white squares on 9 green squares and sew along drawn line. Trim off outer corner of unit leaving 1/4" seam allowance.



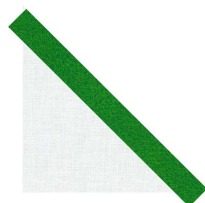
3. Press your seams open. Your block will look like the illustration at right. Trim block to 3.5" square.



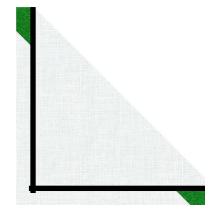
4. Cut a diagonal line from corner to corner on 6.5" white square.



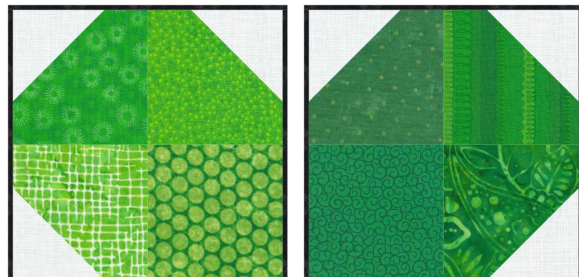
5. Line up raw edges of green strip with diagonal edge of white triangle*. This is a bias edge on the triangle so use care. Sew 1/4" seam along long edge. Press seams open



6. Take 2nd white triangle and line up long edge with green stem unit and sew 1/4" seam. Press seam open. Trim unit to 6.5" square.



7. To construct the block lay out 9 Quarter-Snowball Blocks mirroring placement as shown in illustration at right. Then place 3 green squares following the example. The 6.5" square will fill in at lower right. Sew pieces into sub units of 4 squares as shown in the illustration. BE VERY CAREFUL when lining up the edges, make sure the seams match. Then sew sub units together. Press seams open



Your block should measure 12.5" when done.

*When placing white triangles on green stem strip, fold all pieces in half along the long edges and crease the fold. Then match the creases when sewing the pieces together. This will help you line up the edges when sewing to ensure your unit is even.

