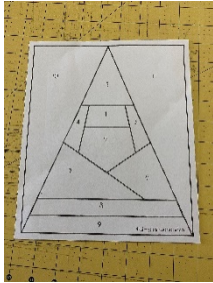


Santa Gnome Paper Pieced Quilt Block Directions

(simplesimonandco.com)

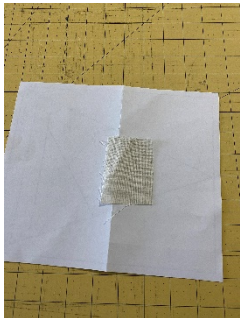
1. Print out pattern. You can find it at <https://www.simplesimonandco.com/2017/12/paper-pieced-quilt-block.html>
2. Measure $\frac{1}{4}$ " all the way around the outer edge. Cut out pattern along your measured line.



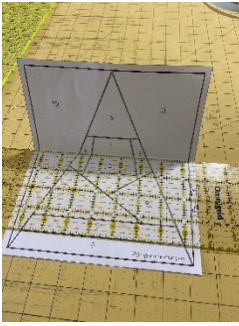
3. Pick assorted fabrics to go in each section for 1-10. Cut out pieces of fabric that are larger than the section by at least $\frac{1}{4}$ " all the way around the shape.



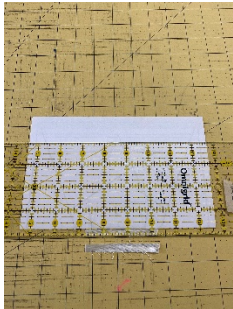
4. Start with #1. Center your chosen fabric for the 1 space with the wrong side touching the wrong side of the pattern over the space for #1. You can glue with a glue stick, if desired. Make sure it is hanging over all sides of the #1 space by at least $\frac{1}{4}$ ".



5. Turn your pattern over and place your ruler on the line between 1 and 2. Crease your pattern on that line and fold it up.



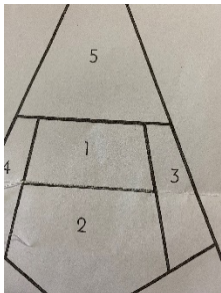
6. Trim the fabric from piece #1 to $\frac{1}{4}$ " away from your fold.



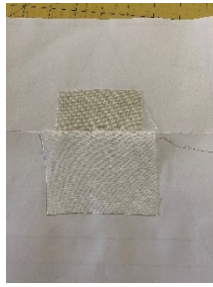
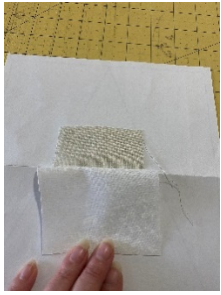
7. Line up the fabric for piece #2 along your trimmed line with right sides together. Make sure that your piece fills the entire space for piece #2 with at least $\frac{1}{4}$ " hanging over all sides, when folded. (I hold my pattern to the light to check to make sure the fabric is covering the whole piece.)



8. While keeping your fabric in the same place, unfold your paper and sew on the line between 1 and 2, using a stitch length of 1.5. Backstitch on both ends.



9. Turn your paper over and open up the fabric. Iron the seam open.



10. Turn your pattern over and line up your ruler on the line between 1-2 and 3. Crease and fold your pattern along this line. Trim your fabric to $\frac{1}{4}$ " away from the fold.



11. Line up your fabric for piece #3 with your trimmed line. Make sure it covers the entire space for #3 with the $\frac{1}{4}$ " extra all around, when the paper is folded.
12. Keep your fabric in place and unfold your paper. Sew directly on the line between 1-2 and 3, using a 1.5 stitch length. Turn your pattern over, open the fabric, and iron the seam open.



13. Repeat process for pieces 4, 5, 6, 7, 8, 9, 10, and 11. When doing edge pieces 9, 10, and 11, make sure that your fabric extends all the way to the edge of your pattern, NOT just to the solid line.



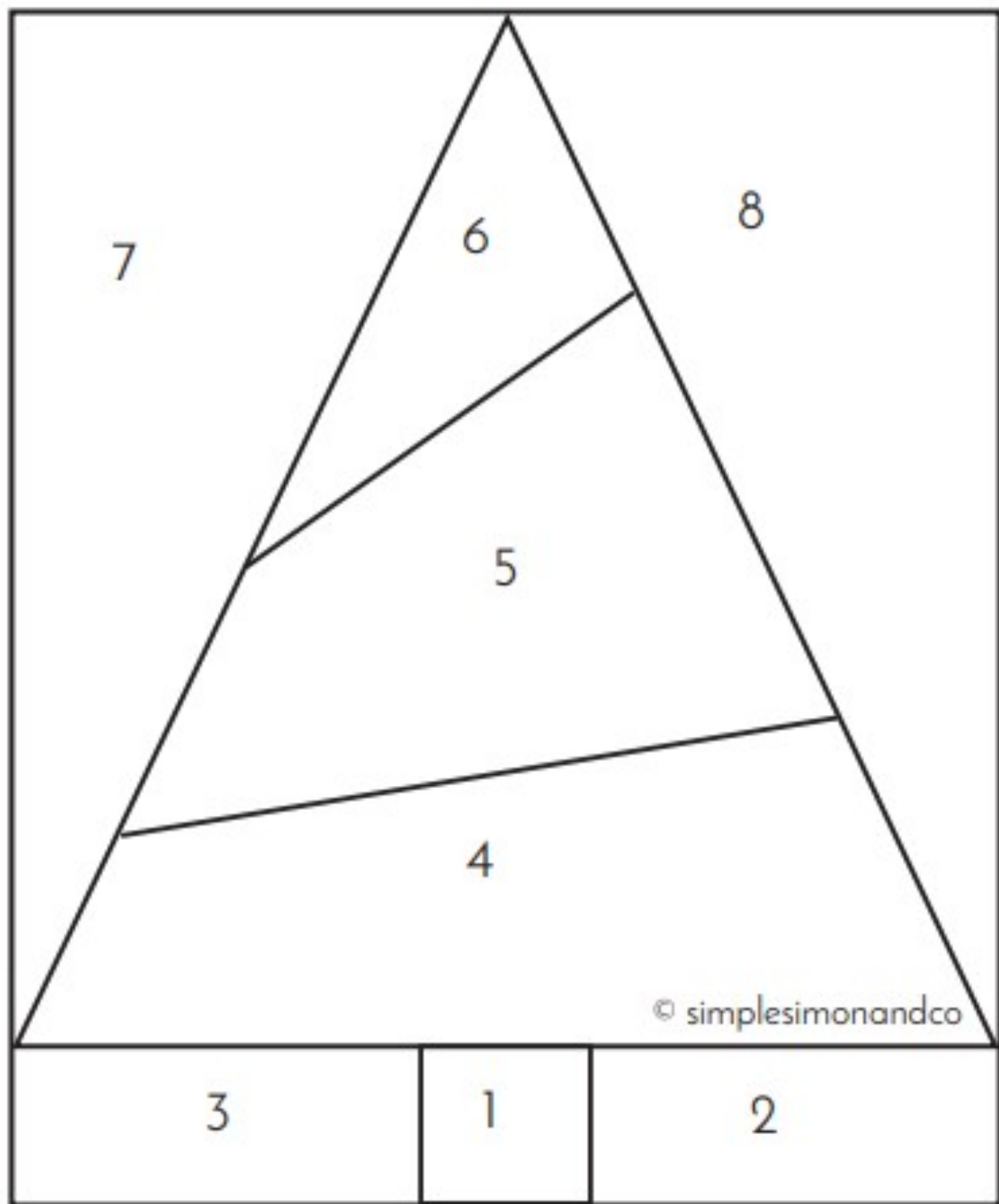
14. When finished with piece #11, trim the block to the edges of your pattern (1/4" from the solid outside line—NOT on the solid line).
15. Tear the paper off the back of the block, using the perforations made from the needle to easily remove the paper. Turn over and iron block.



16.

Christmas Tree Paper Pieced Pattern

17.



Santa Gnome Paper Pieced Quilt Block

